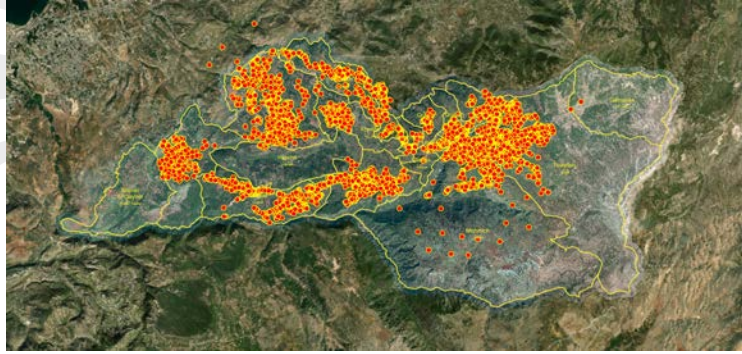




# GIS IN THE UNION OF JURD EL-QAYTEH

Joumana Ahmad



### SALAMATI-CORONA

### TOURISTIC MAP

### CHOLERA RESPONSE



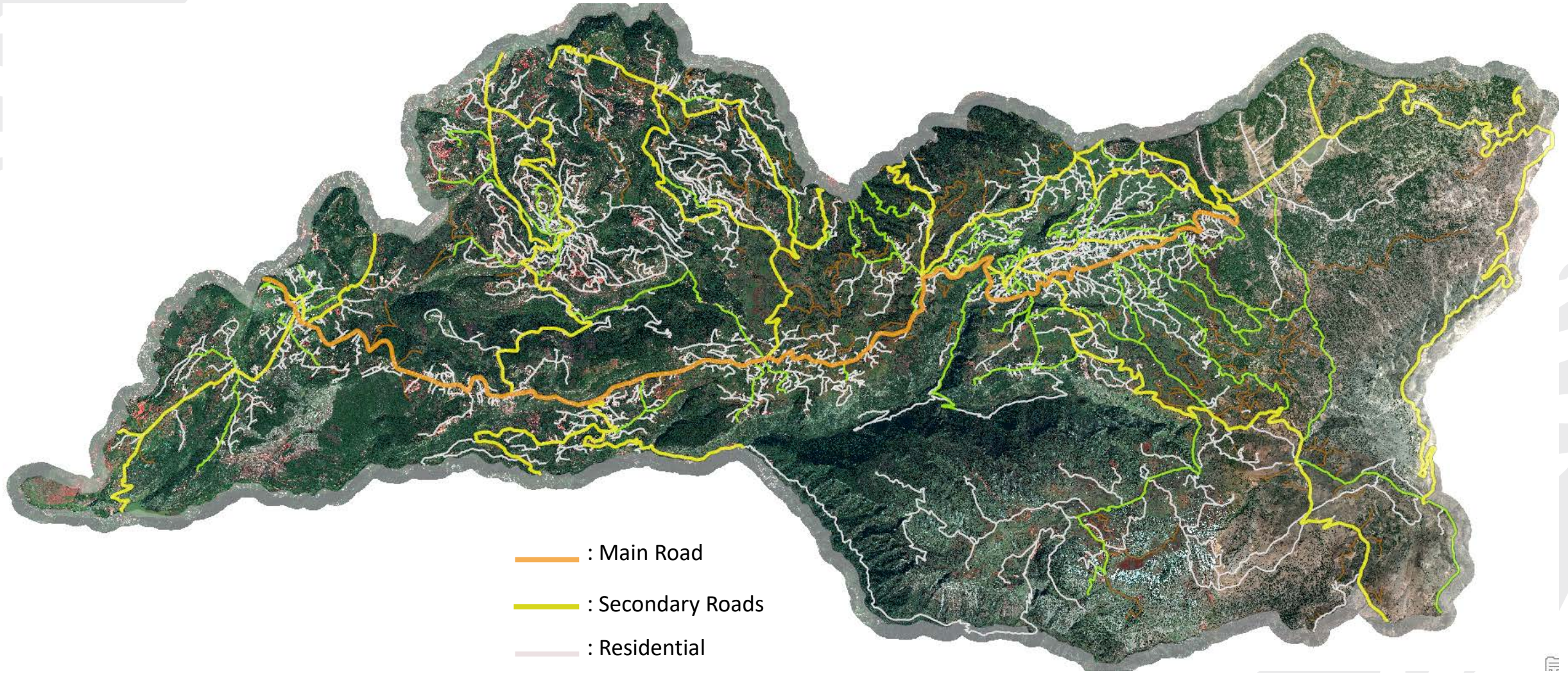
- ROADS MAPPING
- BUILDINGS DIGITIZATION
- GIS TRAINING

HOUSEHOLD DATA COLLECTION

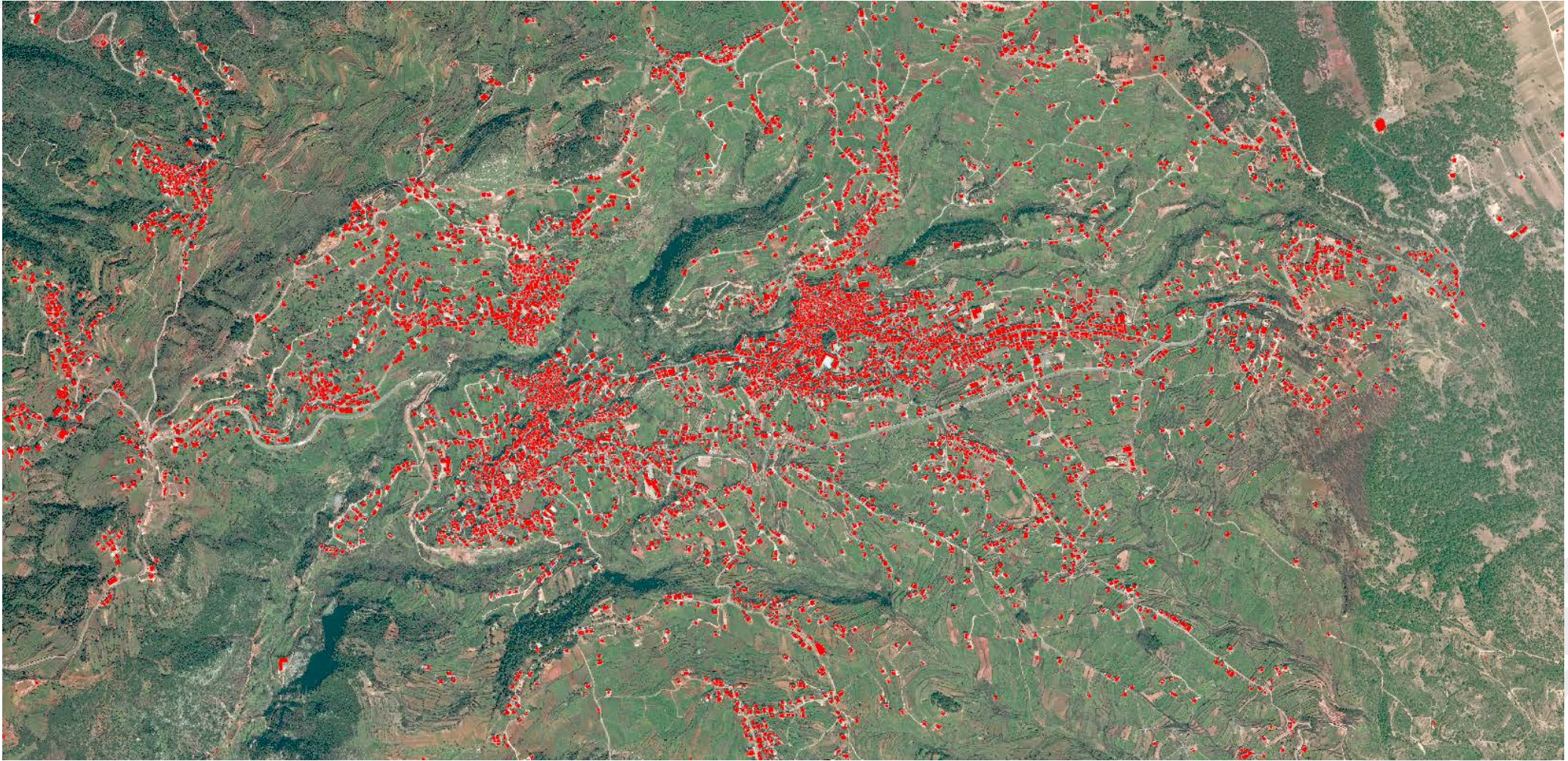
CRISIS MANAGEMENT



# ROADS MAPPING

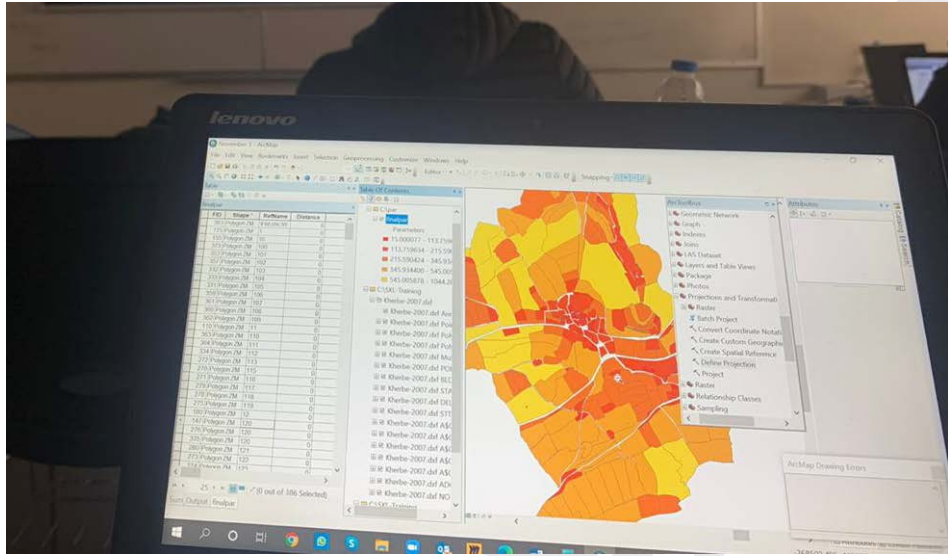


# BUILDINGS DIGITISATION



■ : Houses

# GIS TRAINING



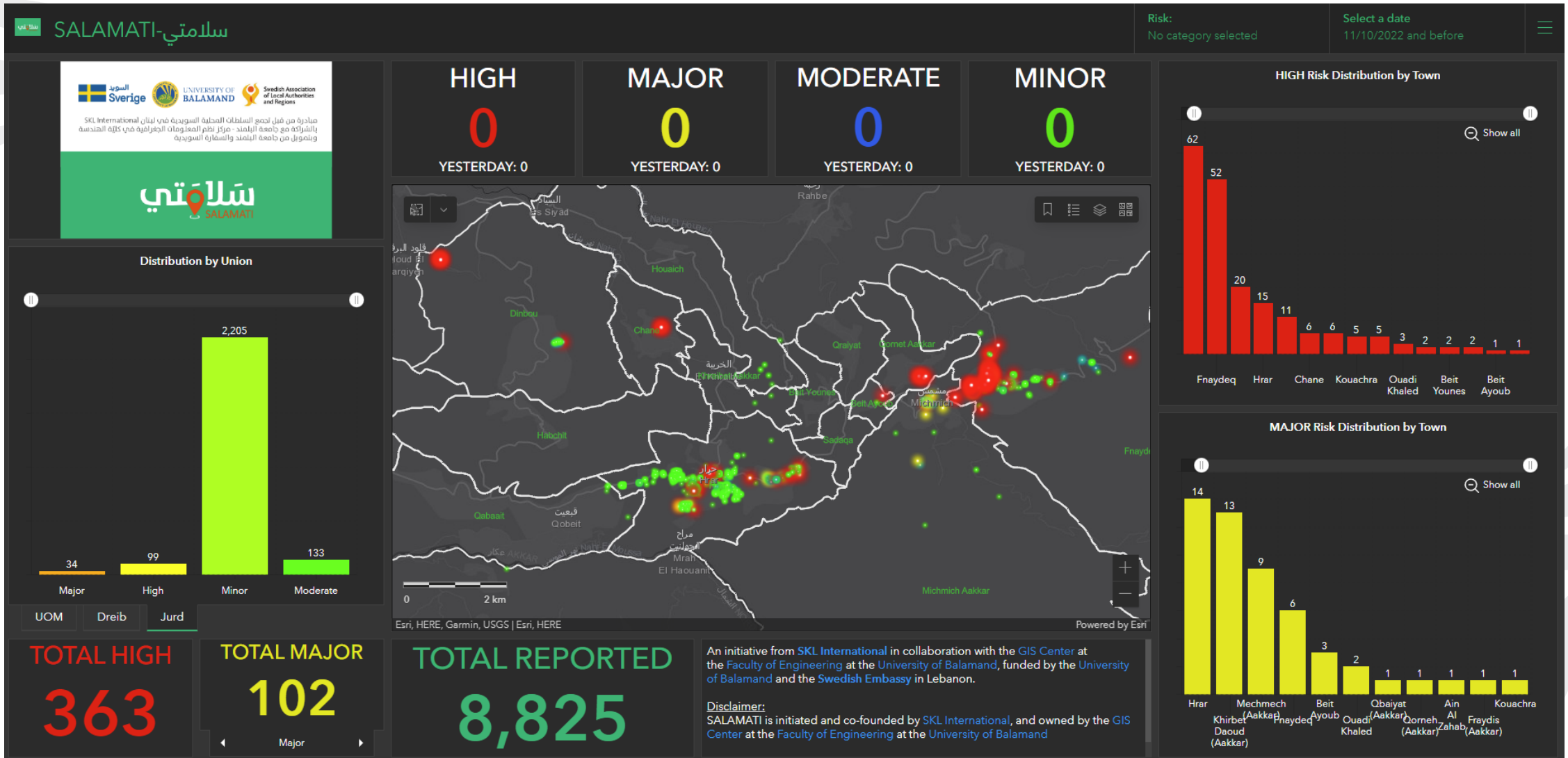
# SALAMATI / CORONA



- Monday 23 March 2020
- Salamati, a GIS-based application helping local authorities to enable rapid initial screening of potential #COVID\_19 cases and the identification of areas and people at high risk, is launched for testing with the Union of Jurd Al-Qayteh in Akkar.
- It is based on data collected by volunteer-trained nurses and doctors and information will be visualized by trained and experienced GIS engineers.
- The objective of this initiative is to help contain the spread of the epidemic, enhance the preparedness of local authorities and increase their ability to manage crises.

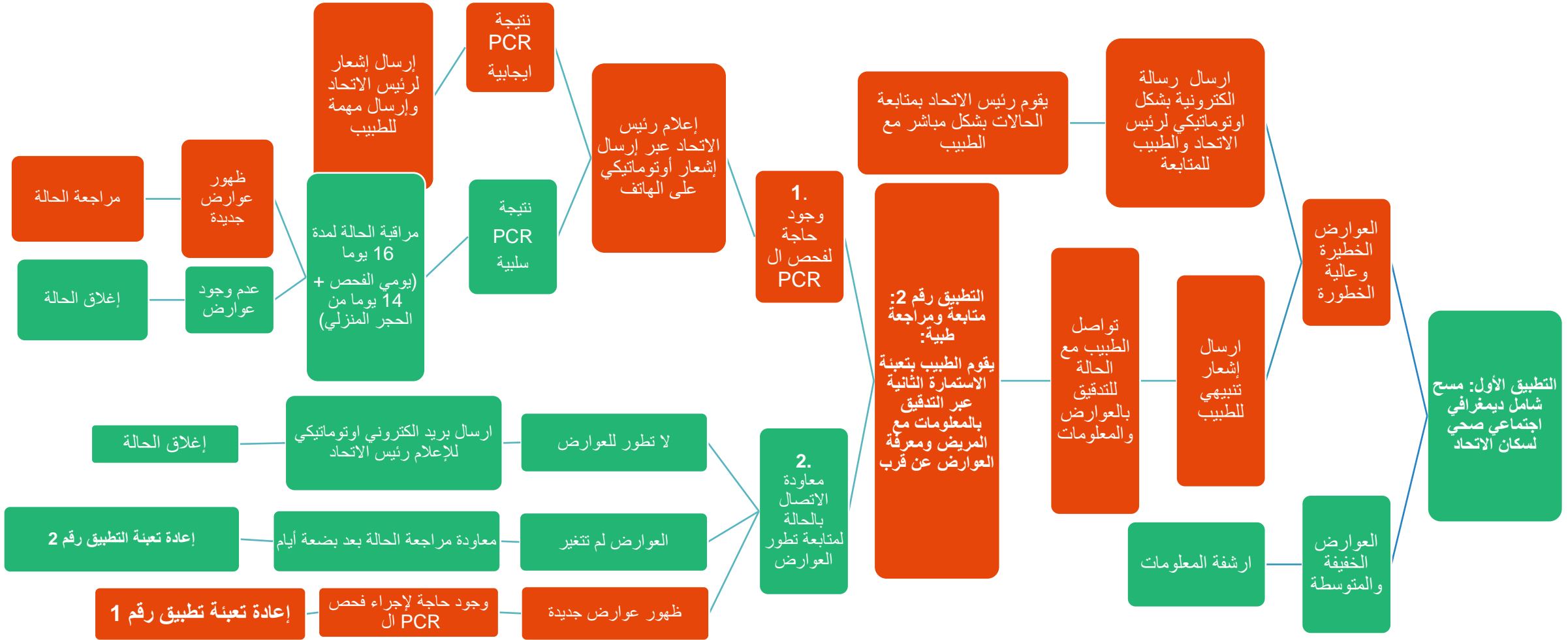


# SALAMATI / CORONA

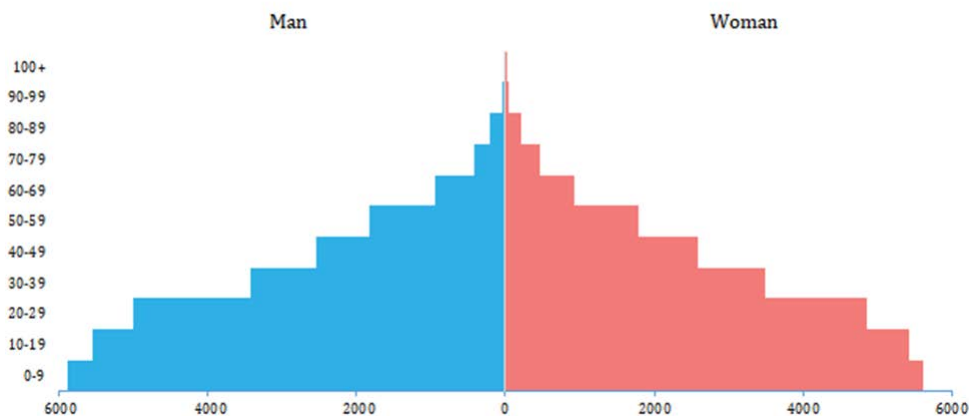
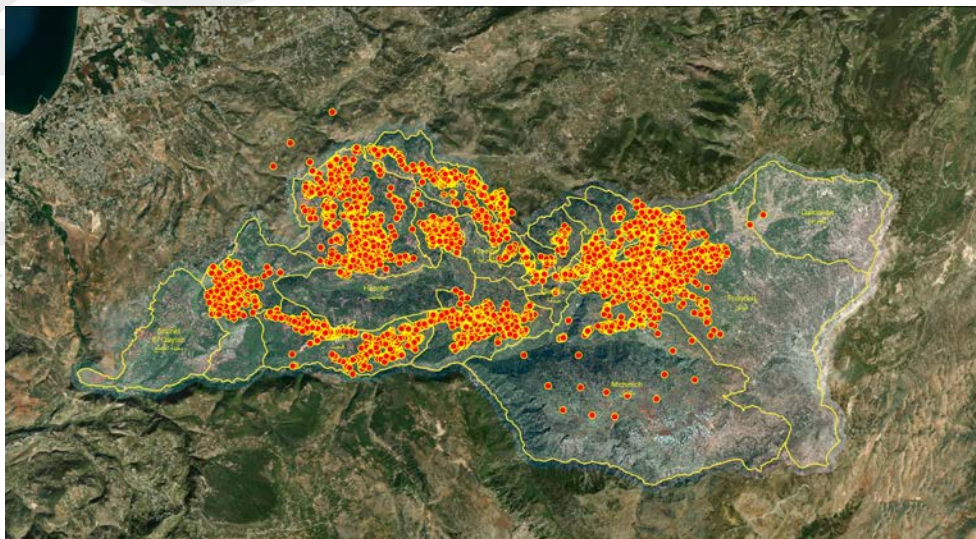




# SALAMATI / CORONA



# HOUSEHOLD DATA COLLECTION



- Due to a lack of accurate data in most municipalities, SALAR International launched a data collection campaign at the household level, door to door, with Lebanese and Syrian families in the union of municipalities of Jurd Al-Qayteh.
- Statistics and studies aimed at local development, and how to build partnerships with funders.
- To develop an action plan to initiate the establishment of a database for each municipality within its geographical range, operated by the union, to determine the priorities and needs of the region, based on a scientific basis and in coordination with the local community.



# CRISIS MANAGEMENT

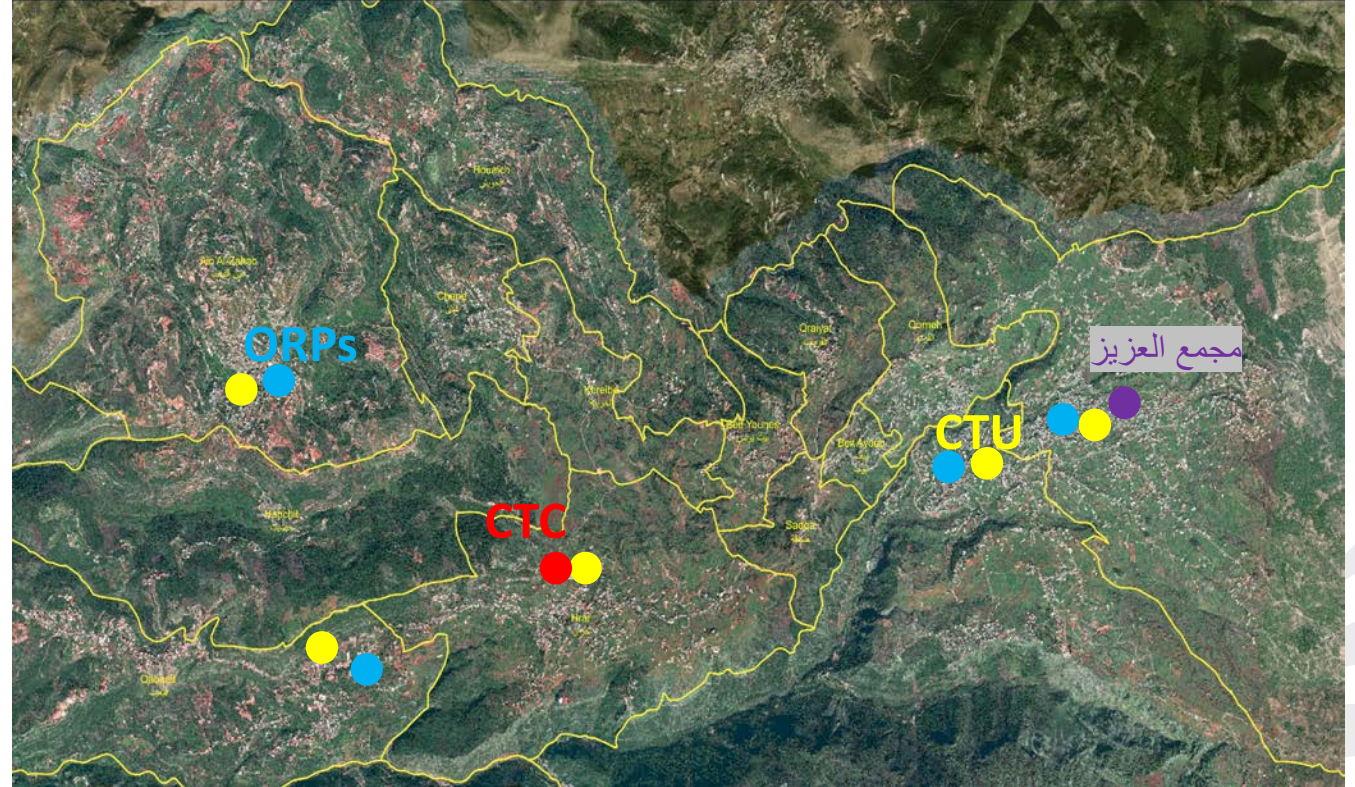
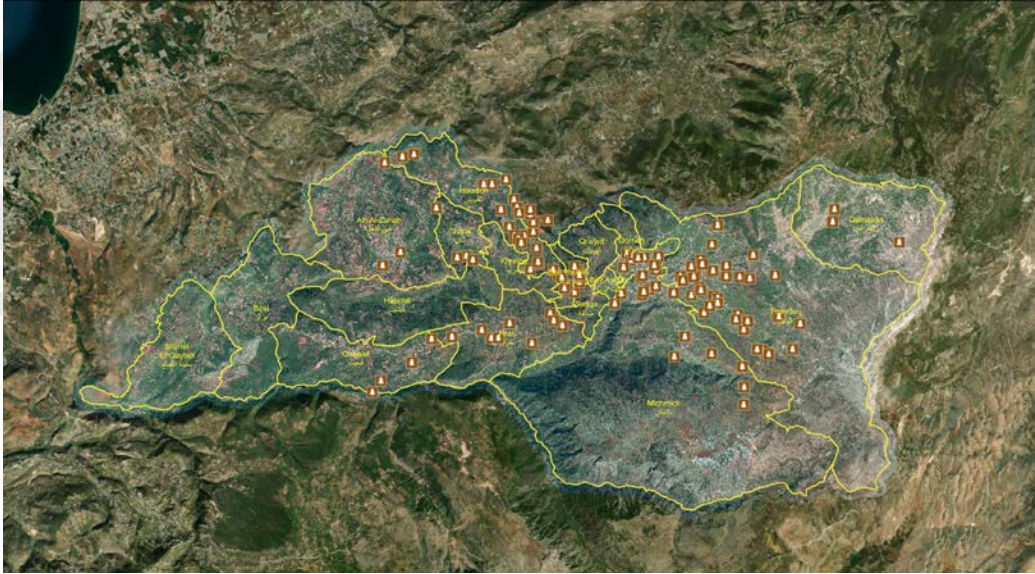
- Joint simulation drill with the participation of a first responders' team, together with the army, internal security forces, civil defense, University of Balamand UOB, the Lebanese Red Cross, and Tadbeer organization, a first of its kind in Akkar.
- The Union of Jurd Al-Qayteh Municipalities and the Swedish association for the local authorities and regions (SALAR International) held combat, evacuation, firefighting, and ambulance maneuver in which the Lebanese Army, the Lebanese Red Cross, Civil Defense, technical unit team through GIS and the first responder team of the Union participated, the municipalities of Jurd Al-Qayteh, Fneideq and Mishmish municipalities, and Tadbeer association.






# SIMULATION DRILL



# CHOLERA RESPONSE



SALAMATI Cholera

-  ORPs: Oral Rehydration Points
-  CTU: Cholera treatments unit
-  CTC: Cholera treatments center

# MONOGRAPH

## JURD EL-QAYTEH

📍 Akkar, Lebanon  
 📏 150 Km<sup>2</sup>  
 👤 53,419 Residents  
 🏠 11,525 Households

### Residents by Age Group

5,383 Toddlers  
 12,748 Children  
 10,893 Youth  
 22,278 Adults  
 2,141 Elderly

### Residents by Gender

26,944 Men  
 26,499 Women

### Households

#### Housing Tenancy

96.41% of Lebanese households  
 0.88% of Syrian households  
 were owned by the occupant families

#### Housing Condition

30.60% of Lebanese households  
 27.85% of Syrian households  
 were in bad, damaged, and very damaged conditions

### WASH

#### Domestic Water

23.85% of Lebanese households  
 20.85% of Syrian households  
 had no water facility whatsoever

#### Wastewater

6.25% of Lebanese households  
 4.14% of Syrian households  
 had no access to any type of wastewater network

### Electricity

22.01% of Lebanese Households  
 16.99% of Syrian Households  
 are not connected to the electrical grid  
 8.05% of Lebanese households  
 1.53% of Syrian households  
 had no source of electricity

### Education

4.29% of Lebanese residents  
 18.73% of Syrian residents  
 did not go yet to school  
 39.50% of Lebanese residents  
 28.06% of Syrian residents  
 were studying

8.22% of Lebanese residents  
 5.63% of Syrian residents  
 never went to school

### Health

23.85% of Lebanese residents  
 33.27% of Syrian residents  
 were suffering from diseases and illnesses

#### Blood Type

39.23% of Lebanese residents  
 62.94% of Syrian residents  
 did not know their blood type

#### Provision of Health Services

39.19% of Lebanese residents  
 were covered by one type of health insurance

#### Specific Needs

2.34% of Lebanese residents  
 11.69% of Syrian residents  
 had disabilities



### Livelihood & Income

#### Working-age Population

##### Youth

9.33% Lebanese Youth  
 0.87% women  
 8.46% men

19.64% Syrian Youth  
 0.89% women  
 18.75% men

##### Adults

The Employment-to-Population Ratio in Adults

31.03% Lebanese  
 3.79% women  
 27.24% men

27.45% Syrian  
 3.04% women  
 24.42% men

#### Child Labour

0.03% of Lebanese children  
 0.16% of Syrian children

#### Unemployment Rate

75.63% of Lebanese  
 75.23% of Syrians  
 in the working age group

#### Youth NEET

8.93% of Lebanese youth  
 18.97% of Syrian youth  
 Not in Education, Employment or Training

#### Income

35.50% of Lebanese  
 45.35% of Syrian  
 individuals in the working age group  
 had a total income of less than 600,000 LL

The gender gap in income between men and women in the working population aged +15 was very high

#### Household Living Status

46.96% of Lebanese households  
 54.68% of Syrian households  
 reported an insufficient income for their living status

#### Assistance Provision

4.91% of Lebanese households  
 34.18% of Syrian households  
 received additional provisions

#### Agriculture

32.48% of Lebanese residents  
 had agricultural land

#### Animal Husbandry

12.65% of Lebanese households  
 practised animal husbandry  
 71.66% of animal husbandry  
 was chicken



Scan for Jurd El-Qayteh Monograph 2022



Scan for Jurd El-Qayteh Monograph 2022

# Thank You